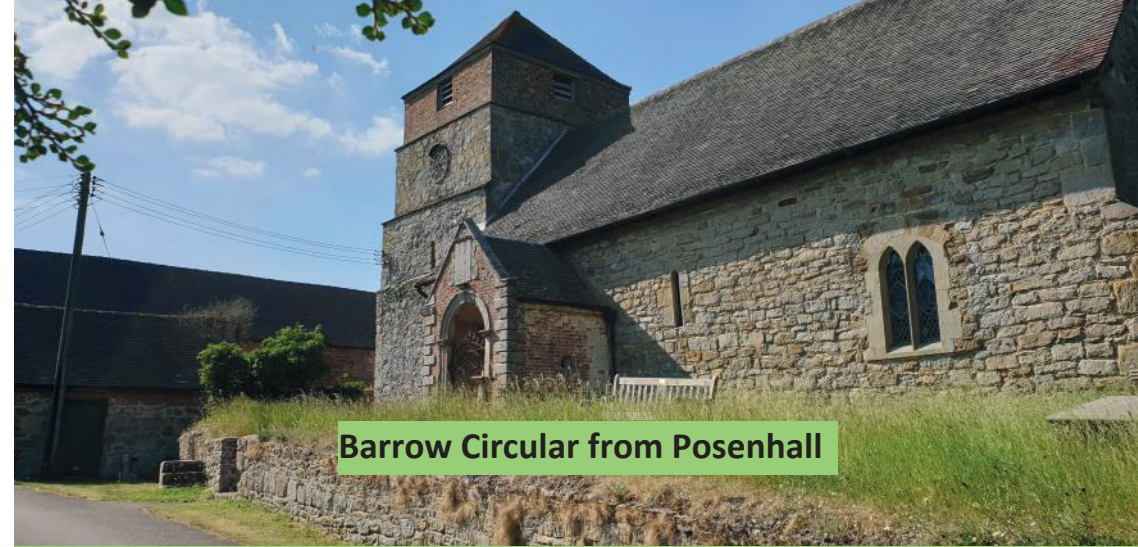


MAP: Posenhall to Barrow 2 Mile Circular Walk (purple route)



Jack Mytton Way near Barrow, The Wrekin in far distance



Barrow Circular from Posenhall

2.5 miles / 4 km: a walk along bridleways between hedges and across fields. NB some of the walk is on B roads (take care!) Vertical gain 95ft / 29m

At Barrow you can visit one of the oldest churches in England, there has been a place of worship here since the C8th. Parts of the C11th Saxon building are still visible. You also walk along one of the most open, scenic sections of the Jack Mytton Bridleway with uninterrupted views across to Brown Clee Hill and The Wrekin.

This walk is an extension to the Posenhall and Wyke circular which you can start either from Broseley or Benthall Hall. It adds another 1.7 miles / 2.7 km to that walk, which is shown in red on the map at the end of this chapter, the route from there is fully described in the walk directions for the Posenhall to Wyke Circular Walk. If you want to continue to Wyke you do so at point 3 (see map).

① Posenhall to Barrow 2km

There is no car parking at Posenhall and only limited parking for church visitors at Barrow. One option is to use the Broseley to Much Wenlock bus. You could choose a day when the Life Skills Tea Shop is open and treat yourself to a cream tea while waiting for your bus home (or ask their permission to park before or after your visit to the cafe.) With your back to Posenhall, about 150m after the Tea Shop entrance the road bends to the right.

The bridleway where you start your walk is between two hedges on the left, next to a farm entrance road and close to the bus stop. The name of the bus stop on timetables is Posenhall Farm.



Follow the bridleway for about 1km. It can be a bit overgrown at first but it does get better, one consolation is that butterflies and birds seem to like it this way! In very wet weather watch out for deep puddles in the middle section, keep to the left side. The views through the gaps in the hedge are great, you can see across fields to Broseley, All Saints Church and Willey Park estate woods to the left.

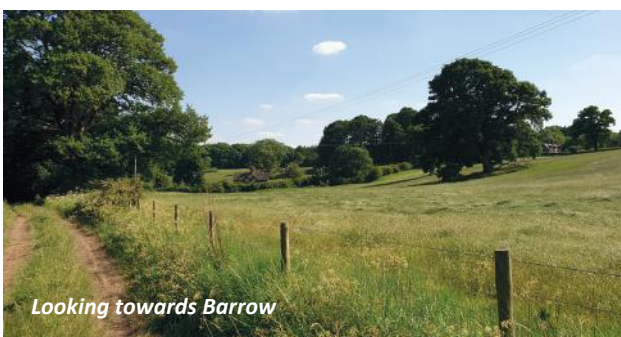


The bridleway starts at Posenhall between two hedges

The going gets easier and you soon get a glimpse of Barrow School up the hill on the right hand side. You exit the bridleway onto the B road. Take care, it isn't usually busy but cars can be driven very fast along here. After about 200 metres at the Barrow village sign there is a welcome verge and footway on the left side of the road. You can't see the old school from the road anymore as it's hidden by trees but you can see a row of old almshouses on the left, all were built in 1818. The rest of the hamlet of Barrow is hidden behind the church. Take the small lane on the left to visit the ancient Grade 1 listed church.



Views across fields towards Broseley



Looking towards Barrow

St Giles Anglo Saxon and Early Norman Church Barrow

St Giles Church was founded by Much Wenlock Abbey, later St Milburga's Priory. Originally a small C8th single room stone oratory, it was rebuilt as a C11th church and then 'improved' by the Normans, and later partly rebuilt of the Victorians. Much of the Anglo Saxon building still survives. The Saxon masonry looks better built than the rough Norman stonework. The top third of the tower was added early C18th, the bottom is early Norman as are three Norman windows in the Nave, all built no later than 1100! The chancel and its window are Saxon. John Rose who established the Coalport China Works came from Barrow and he is buried here.

2 Barrow to Arlescott via Jack Mytton Way 0.6miles / 1km

Walk around the back of the church and exit through a small churchyard gate back onto the lane where you left the B Road. Cross straight over the road to join The Jack Mytton Bridleway between two hedges. This becomes a clear broad track which you follow across fields for 800m. Cross straight over the B4375 Broseley to Much Wenlock Rd and continue to a gate, where go straight on through the gate. (ignore the bend to the left here). To continue to Wkye, you stay on the Jack Mytton Way and walk straight on for another 1km to join the lane to Wyke (follow directions on the Posenhall to Wyke circular walk from this point.) To return to Posenhall turn immediately right through a small kissing gate.



Views across wheat fields and poppies to Brown Clee Hill: behind you to the right on Jack Mytton Way just after leaving Barrow

3 Arlescott to return to Posenhall 0.6 miles 1km

The path keeps close to the hedge going downhill; you'll get excellent views towards Benthall and Broseley ahead and The Wrekin to your left. In about 500m you come to the field corner, look for a hole in the hedge and the start of a 'green tunnel path' between two hedges on your right. After 400m you reach the Broseley to Much Wenlock B road, you turn left and walk back into Posenhall. The bus stop is a few metres further on, the tea rooms about 150m.



The start of The Jack Mytton Way by the B road in Barrow is opposite the lane to the church